

PHOTOGRAPHIC PANELS

TONY STRINGER MARCH 2024

WHAT IS A PANEL?

A collection of images that have a common link

AN EARLY EXAMPLE



WHY CREATE A PHOTOGRAPHIC PANEL?

- Sometimes one image is not enough
- To tell a story or convey a feeling or concept
- To fully explore a subject or genre
- To show the development of an idea or concept
- To create a body of work for a distinction
- To challenge yourself and develop and improve your photography skills

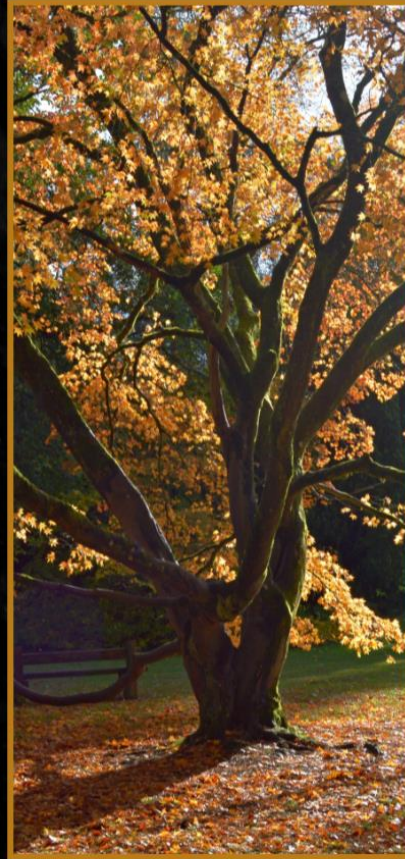
KEY ELEMENTS OF A PHOTO PANEL

- Clear theme
- Quality images
- Cohesive images
- Well laid out
- Good presentation

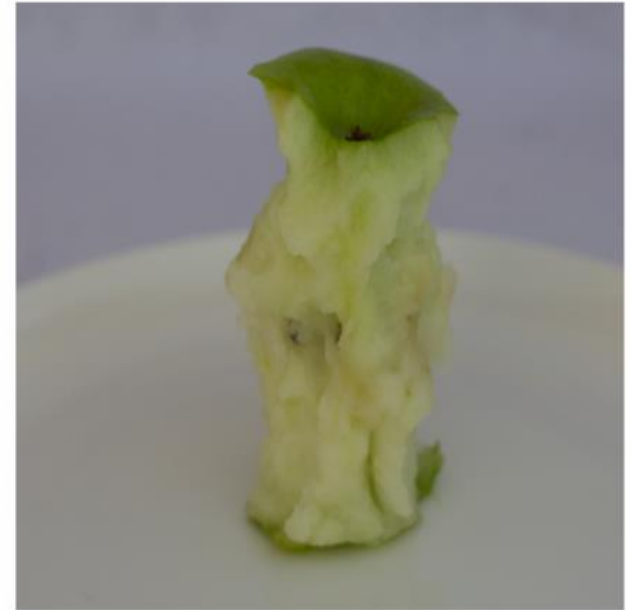
SOME TRIPTYCH EXAMPLES

Selected from club competition entries

AUTUMN LEAVES – JAMUNA KOLILANATHAN



GOING, GOING GONE – KEITH SPICER



PROGRESS – KEITH SPICER



Progress?

FIFTY FIFTY – TONY STRINGER



FALL FOLIAGE – JAMUNA KOLILANATHAN



CHELTENHAM CARAVANS – HOWARD EVANS



SOME QUINTYCH EXAMPLES

Selected panels from the 2022 and 2023 Kingswood Salver Challenge

WHAT IS THE KINGSWOOD SALVER?

- Annual WCPF club competition
- Panel of five themed images
- Theme of the club's choice
- Each image by a different photographer

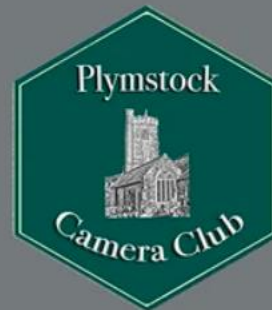
THIRD - KINGSWOOD SALVER 2023

BRISTOL
PHOTOGRAPHIC SOCIETY



Birds With Attitude

HIGHLY
COMMENDED
-
KINGSWOOD
SALVER 2023



Discover
Dartmoor
First Day Cover



“Created by Nature,
Conserved for Nature.”

UNPLACED - KINGSWOOD SALVER 2023

TYNDALE
PHOTOGRAPHY CLUB

STILL LIFE



FIRST - KINGSWOOD SALVER 2022

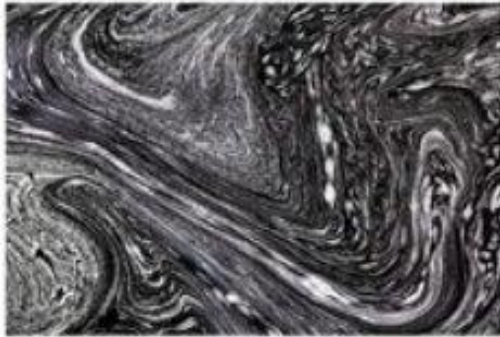
Men With Beards



BRISTOL PHOTOGRAPHIC SOCIETY

UNPLACED - KINGSWOOD SALVER 2023

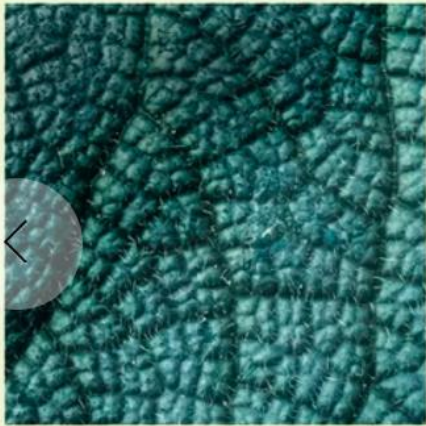
Water Movement



Tavistock P C

SECOND - KINGSWOOD SALVER 2022

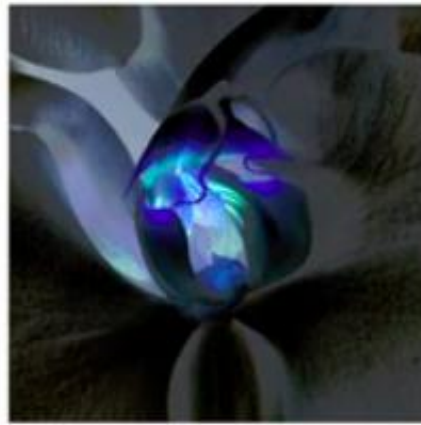
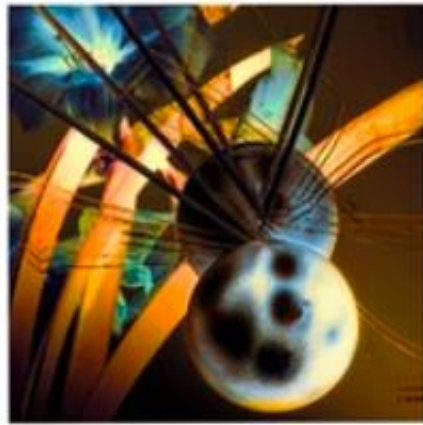
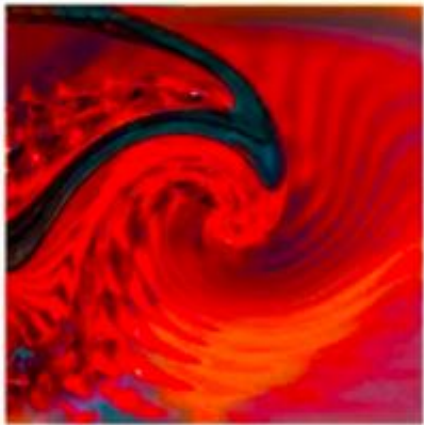
Lincombe Barn CC



Nature's Patterns

UNPLACED - KINGSWOOD SALVER 2023

OUT OF THIS WORLD



WADEBRIDGE AND DISTRICT CAMERA CLUB

UNPLACED - KINGSWOOD SALVER 2023



Bideford
Camera Club



A Cluedo
Fantasy

RPS ASSOCIATE DISTINCTION CRITERIA

- A Statement of Intent that defines the purpose of the work, identifying its aims and objectives.
- A cohesive body of work that depicts and communicates the aims and objectives set out in the Statement of Intent.
- A body of work that communicates an individual's vision and understanding.
- A high level of technical ability using techniques and photographic practices appropriate to the subject.
- An appropriate and high level of understanding of craft and artistic presentation.

RPS ASSOCIATE DISTINCTION SOI

STATEMENT OF INTENT

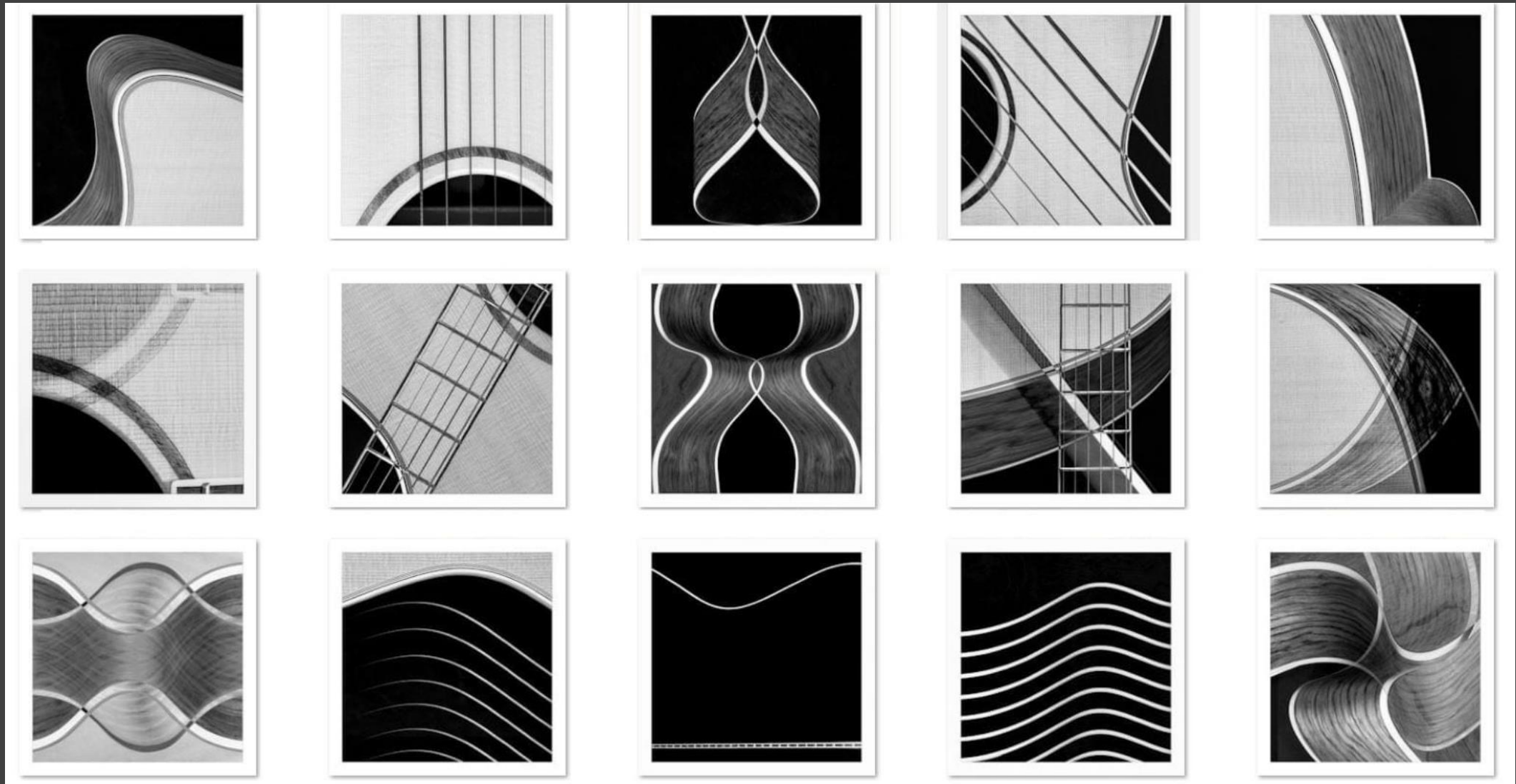
My guitar.

I love music and have played guitar for many years. The guitar is a beautiful instrument and, in the hands of a master, capable of producing sounds that can transport the listener to a whole new world. But, for me, there is also beauty in the design of the guitar itself with its combinations of sensuous curves and rigid straight lines, variations in tones and textures.

In this panel my intention is to portray my guitar to show its inherent beauty and to build on its simple shapes to create images which suggest musical connotations such as melody and harmony.

Dave Ashfield ARPS

RPS ASSOCIATE DISTINCTION PANEL



RPS ASSOCIATE DISTINCTION SOI

When I was younger I enjoyed participating in a variety of extreme sports. Now a little older, I prefer to capture these sporting moments of windsurfing and surfing within my photography.

I particularly enjoy capturing water sports in stormy, inclement weather conditions, revealing the raw power of the sea, with a little subtle lighting. These sports are about enjoying the challenging conditions presented by the sea, with windsurfers and surfers enjoying the very strong wind and waves to enhance their action and performance.

In this panel I have sought to capture the atmosphere of rough stormy sea conditions and to freeze the action in both disciplines. I have tried to highlight the variety of skills, concentration and determination displayed by the windsurfers and surfers, along with the stark, stormy weather conditions and remoteness. To achieve this I have mainly used colour images along with a selection of monochrome surfing images.

RPS ASSOCIATE DISTINCTION PANEL



01



02



03



04



05



06



07



08



09



10



11



12



13



14



15

NEW ANNUAL PANEL CHALLENGE

- This is not a competition – critique only
- Panels of 3 or 5 images (Triptych or Quintych)
- DPI or Print:
 - DPI to include DPI image of the complete panel in the desired layout.
 - Print to include a DPI image of the complete panel in the desired layout plus the individual printed images.
 - All DPIs and prints to comply with current competition rules except - at least one image in the panel should have been taken in the last two years but the others can be older.

NEW ANNUAL PANEL CHALLENGE

- Members will be invited to present their panels to the judge who will then critique them with the member:
 - DPI panels will be restricted to critique as presented.
 - Print panel critique may include reworking of the panels with the member to enhance the presentation.
- Members will be asked to prioritise their DPI panels in case there is a need to limit the total number of panels entered.
- Final guidelines on the number of panels that can be submitted are still to be decided.